

Stanford King Center on Global Development

ANNUAL REPORT
2022-2023



Making an
IMPACT



Contents

- 1** A Note from Leadership
- 2** Our Impact
- 3** Our Global Reach
- 4** The Next Generation of Global Scholars
- 8** King Center Fellows 2022–2023
- 9** Faculty Programs and Initiatives
- 10** Educational and Community Events
- 12** Financials and Support
- 13** Donor and Visiting Fellow Spotlights
- 14** Opportunities to Engage

About

The King Center on Global Development—a Stanford University research center—strives to help improve the lives of people living in poverty around the world. We leverage the talent, enthusiasm, and energy of the Stanford community to facilitate groundbreaking research that not only helps to provide a better understanding of critical issues, but also contributes to creating scalable solutions to address the root causes of poverty and inequity. We train and inspire a diverse new generation of global scholars and leaders. We also inform global debates and help transform policy and practice.

Background photo:
Hand pump at a primary school in Uttar Pradesh, India. Photo credit: 2022
Photo Contest submission by Anvesh Badamikar, MS '21 MEng '23.

A Note from Leadership



Dear Friends,

We are thrilled that King Center faculty, students, and fellows have been able to fully resume conducting global development research in locations around the world after several years of pandemic-related restrictions and delays. The King Center supported work on, and in, at least 65 countries in 2022–2023, increasing our annual research funding to Stanford scholars by over 80 percent since 2020. We are pleased to share some highlights of that work.

This year's annual report showcases how our students' and fellows' research helps shape policies and programs that tackle global poverty and inequity. We highlight how King Center research initiatives are using data to help governments in Côte d'Ivoire and Ethiopia make policy decisions. We explore the tools our researchers have developed that make it easier and more cost-effective for NGOs and collaborators to collect information on participant experiences and program effectiveness.

Our 2022–2023 report also illustrates the real-world results of our next-generation programs. Not only are we inspiring undergraduate students, we are shaping the trajectories of young scholars from low- and middle-income countries: the next-generation ambassadors of change. We are supporting graduate students and postdoctoral fellows from across the university in their ambitious new research agendas; this report shares some examples of our scholars' dynamic field studies from Colombia to Pakistan.

Underpinning our diverse community of fellows, scholars and faculty are our amazing King Center staff. The hard work of this small team ensures our programs and events run smoothly, and their dedication allows us to maximize the impact of our resources.

We'd also like to thank Pascaline Dupas, who served as the faculty director of the King Center for the past three years. She played a crucial role in growing the impact of the King Center, particularly our next-generation programs, and has built the reputation of Stanford and the King Center as key places for global development research. We look forward to welcoming Katherine Casey as our new faculty director in September 2024, as we continue our journey of excellence and impact in global development research.

Looking ahead, we eagerly anticipate your participation in our in-person and virtual events throughout the coming year as we continue to foster dialogues and connections within the academic community as well as the broader global development arena. We look forward to sharing our news and progress with you during the journey ahead.

Sincerely,

A handwritten signature in black ink that reads "Jessica Leino". The signature is written in a cursive, flowing style.

Jessica Leino

Interim Director / Executive Director and Research Scholar
King Center on Global Development

Our Impact

September 1, 2022–August 31, 2023



100+
students
supported

2,300
people attended
King Center
events

112
project
awards

Research
conducted in
65
countries

\$3m+
awarded in new
faculty research
support

64
events
in-person
& online

\$635k+
in support
of student
research

155
affiliated
Stanford faculty
& researchers

Background photo:
Researchers in Pakistan sample soil to measure lead
content as part of a King Center initiative. Photo credit:
Predoctoral Research Fellow Christlee Elmera.

Our Global Reach

September 1, 2022–August 31, 2023



Education and Skills

16 PROJECTS

Quality education allows people to gain skills and become more knowledgeable and productive. The King Center supports research that improves educational outcomes and boosts access to quality education systems.



Environment and Climate Change

27 PROJECTS

Climate change largely impacts people in low- and middle-income countries, reversing decades of development gains. Our research investigates the alleviation of poverty in the face of the climate crisis and mitigation of climate impacts on economic growth.



Gender and Equity

26 PROJECTS

Unequal access to basic health care, education, employment, and representation exacerbates inequity. We support research to understand and improve equity for women and those facing discrimination.



Governance and Institutions

30 PROJECTS

Governance is crucial in the fight against poverty. The King Center supports research on the quality of governance and the factors that bring about inclusive, resilient, democratic institutions.



Health

21 PROJECTS

Poor population health burdens many low- and middle-income countries, and access to quality health care remains limited and unequal. Our research strives to identify effective policies and programs that support healthy lives and well-being for all.



Innovations in Methods and Data

14 PROJECTS

The challenges facing the poor are increasingly complex and difficult to measure over time. We support novel research that improves the monitoring and measurement of programs and policies that impact global development.



Trade and Migration

11 PROJECTS

The global movement of people and goods is increasingly important in our interconnected world, particularly in low- and middle-income countries. We support research on the changing social, economic, and political conditions impacted by trade and migration.



Urbanization and Infrastructure

15 PROJECTS

Cities are rapidly growing in emerging economies, and urban poverty is rising. The King Center aims to promote sustainable, inclusive urbanization by supporting research on infrastructure development, job creation, and access to services.



Work, Entrepreneurship, and Finance

20 PROJECTS

In emerging economies, entrepreneurship and access to finance are important contributors to economic growth. We support researchers exploring business and financial innovations that improve the entrepreneurial ecosystem and access to decent work.

65
Countries



The Next Generation of Global Scholars

The King Center's programs have a lasting impact on the next generation of scholars, practitioners, and leaders in global development. Stanford [undergraduate](#) and [graduate](#) students learn new skills and gain a better understanding of issues on the ground by engaging in experiential learning opportunities with King Center faculty affiliates and receiving support for their independent research. Promising early-stage scholars from around the globe gain valuable training and incubate ambitious new research while at Stanford and the King Center. Whether their future careers take them into the private or public sectors or into academia, the King Center provides a launching pad for scholars working on new solutions to global development challenges.

Photo above:
Summer Undergraduate Research Assistants celebrate Indonesian Independence Day with local collaborators at the Institute for an Independent Judiciary (LeIP) in Jakarta.

Postdoctoral Research Reveals the Price of Nepotism in Politics

While [completing a postdoctoral fellowship](#) at the King Center, [Juan Felipe Riaño](#) focused his attention on his native Colombia, studying the effects of nepotism in the country's public sector. Using more than five years of data, Riaño found that about 38 percent of civil servants in Colombia had relatives in the public service; 18 percent had ties to a manager or supervisor; and 11 percent worked with relatives in the same agency or department. Perhaps most significantly, Riaño found that an office's performance was negatively correlated with close family connections.



"While promoted workers generally had more education, public sector experience, and fewer records of misconduct, these differences became insignificant or even reversed when the promotees were related to top non-elected bureaucrats," he says.

Riaño also found that bureaucrats were able to get around the intent of a 2015 policy that prohibited the appointment of certain family members by reshuffling positions or providing temporary increases in pay.

This fall, Riaño, whose work combines political economy, development economics, and economic history, joined Georgetown University as an assistant professor in the department of economics.

Predocctoral Research Fellows Forge New Pathways in Democracy & Development

The King Center’s [Predocctoral Research Fellows Program](#), which aims to [expand the pool of talent studying global development](#), recruits young scholars from around the world to work closely with faculty on cutting-edge research across the university.

[Diego Tocre](#), a predocctoral fellow from Peru who has now begun a PhD program at Columbia University, worked in the Inclusive Democracy and Development Lab, where he studied the electoral representation of marginalized groups in developing countries. In addition, Tocre worked with the [Conflict and Polarization initiative](#), researching indigenous economic practices and people’s views on democracy in Latin America.

[Ei Thandar Myint](#), who grew up in Myanmar, worked with political scientists and economists, researching barriers to state capacity in Malawi, reproductive health decisions in Burkina Faso, and gender representation in politics in India, among other topics. Through the King Center’s [Inclusive Democracy and Development Lab](#), she also worked on developing a global index to measure social trust in multiple countries.

“My experiences at the King Center have confirmed my aspiration to contribute to understanding and solving the pressing challenges of global development,” says Myint, who recently started a PhD program at the University of California, Berkeley. “The program has certainly equipped me with essential skills to be prepared for my doctoral studies and grow as a researcher.”



Photo above:
A woman works from her home in India as part of a study on digital employment by graduate student funding recipient Suhani Jalota.



Background photo:
Graduate Student Research Funding recipient Fridah Nyakundi speaks with the owner of a fish pond for her research on the commercialization of aquaculture in Kenya.



Photo above:
Graduate Student Research Funding recipient Mark Walsh with local researchers from Gallup Pakistan on a field visit for his research on barriers to communication in Pakistan.

Graduate Student Research Examines Barriers to Communication in Pakistan

In 2021, Pakistan launched a mobile banking platform designed to improve financial inclusion, but awareness of the service has been limited. Earlier this year, [Mark Walsh](#), who received Graduate Student Research Funding from the King Center to [study social learning in the country](#), conducted an experiment that might shed light on why.

When Walsh asked villagers to pass on informational pamphlets about the service to their friends and acquaintances, they were reluctant to do so because they were afraid of how recipients would respond: Would they be blamed if the person had a negative experience with the service? Would the person be offended that the information was shared unprompted? In an experiment with more than

1,500 people in 50 villages in rural Pakistan, Walsh found that when people could remain anonymous, the number who passed on the pamphlets increased by 23 percent.

Walsh's research, which includes suggestions for how to address such concerns, adds to the literature on social learning models, or the study of how people learn from their peers.

"When people have social concerns, they communicate in different ways to different people," Walsh explains. "They are worried about these things for good reason and we need to account for those concerns in how we design interventions."

Photo below:
A mother holds her child, who is participating in a study examining pathways of parasitic contamination in Bangladesh led by Faculty Affiliate Jade Benjamin-Chung.



Background photo:
Undergraduate Research Assistant Erin Floranda, '24, in Faculty
Affiliate Desiree LaBeaud's arboviral epidemiology lab with
another lab member, Esra Buyukcangaz.

Undergraduate Research on the Spread of Infectious Diseases

Stanford University School of Medicine Professor and King Center Faculty Affiliate [Desiree LaBeaud](#) had wanted to study health outcomes for children born to women with dengue virus for years but could never find the time. Then Annabelle Smith, '24, an undergraduate research assistant funded by the King Center, volunteered to take the lead on the project. An abstract she wrote based on her findings was accepted for a poster presentation at the American Society of Tropical Medicine and Hygiene's annual meeting in October. Smith is one of [several undergraduates the King Center has supported to work in the LaBeaud Lab](#), which specializes in the study of mosquito-borne viruses. Erin Floranda, '24, analyzed blood samples and conducted experiments with Vero cells. Another student, Cassidy Dalva, '24, helped researchers in the lab with communication strategies, including by helping draft a forthcoming opinion piece for the *Journal of the American Medical Association*. LaBeaud says the King Center's support of undergraduate researchers is vital. "They are energized and excited about applying their new skills, and they move our research forward—doing the work of science," she says.

King Center Fellows 2022–2023

RONALD I. MCKINNON MEMORIAL FELLOWS



HARSH GUPTA
PhD student
Department of Economics



AKHILA KOVVURI
PhD student
Department of Economics



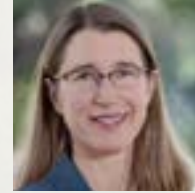
VLASTA RASOCHA
PhD student
Department of Economics

DONG WEI FACULTY FELLOW



JENNIFER PAN
Professor of Communication,
School of Humanities and Sciences

PEIROS FAMILY FACULTY FELLOW



ERICA PLAMBECK
Charles A. Holloway Professor of
Operations, Information & Technology,
Graduate School of Business

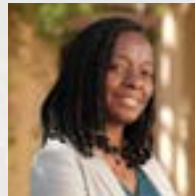
POSTDOCTORAL FELLOWS



JEREMY BOWLES
United Kingdom
political economy



YOSHIKA CRIDER
United States
energy and resources



MARIE CHRISTELLE MABEU
Cameroon
economics



JUAN FELIPE RIAÑO
Colombia
economics



KARMINI SHARMA
India
economics

PREDOCTORAL FELLOWS



MERT AKAN
Turkey



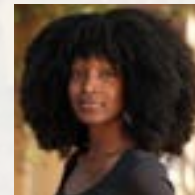
SHAKIL AYAN
Bangladesh



AMOGH BANDEKAR
United States



MICHAEL BESHAY
Egypt



BESINDONE DUMI-LESLIE
Nigeria



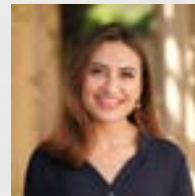
CHRISTLEE DORIS ELMERA
Haiti



AMNA AHMED EL MUSTAFA
Sudan



SUHI HANIF
Bangladesh



LAURA FABIOLA HERNANDEZ
Colombia



EI THANDAR MYINT
Myanmar



DANIEL PRABURAJ
India



DIEGO TOCRE
Peru



FADELA SADOU ZOULEYA
Cameroon

Background photo:
Sisters walking to school
together in the morning
in Ghana. Photo credit:
2023 Photo Contest winner
Tracy Li, EdS '25, Graduate
School of Education.

Faculty Programs and Initiatives

The King Center has more than 120 [affiliated faculty](#), representing all seven of Stanford's schools. From the School of Humanities and Sciences to the School of Engineering, faculty members bring unique expertise to bear on global development challenges.

The King Center also supports multidisciplinary faculty [initiatives](#) that harness and develop the university's distinctive research strengths on global development and poverty. These multi-year projects bring together communities of scholars, policymakers and practitioners to apply cutting-edge research to sustainable development and poverty alleviation challenges, with broad implications.

Government Decisions & Data in Africa— Impacting Community Lives

When the Ministry of Education in Ethiopia wanted to find out whether parents would be ready to send their children back to school after they were closed at the start of the COVID-19 pandemic, researchers from the King Center's African Urbanization and Development Research Initiative ([AUDRI](#)) were able to [provide the answer](#). That's because the initiative began collecting data on households in the Addis Ababa area nearly a decade ago.

"We were able to quickly pivot and do phone surveys with study participants," says AUDRI co-lead investigator and former King Center faculty director Pascaline Dupas.

AUDRI also has panel data from households in Abidjan, Côte d'Ivoire, and—together with the [Abdul Latif Jameel Poverty Action Lab](#)—has worked with the government in that country to study the roll-out of a new health insurance model.

The data is a "public good," Dupas says. "The ability to be very responsive and help governments answer specific questions they may have has been very useful."

New Survey Tool Facilitates Rapid-Response Research

In the spring of 2019, the King Center's [Migration and Development Initiative](#) (MDI) and Stanford's [Immigration Policy Lab](#) (IPL) began creating a tool to conduct surveys over WhatsApp, led by Professor Jeremy Weinstein and Program Manager Jessica Sadye Wolff. Traditional surveys—whether used for academic research or service delivery organizations to collect feedback from their clients—are time consuming and expensive. A WhatsApp-based method would reduce costs and allow surveyors to stay in touch with respondents remotely.

The idea proved particularly prescient: A year later, much of the world shut down because of the global pandemic. By then, the WhatsApp tool was ready for release. Pilot tests of the tool with two partner organizations showed that a 19-question survey costs as little as \$0.32 USD per survey on average (phone surveys can easily cost \$5 each).

IPL has used the survey method with resettled refugees in the United States and with Venezuelan refugees in Colombia and regularly fields requests from others—including Stanford students—about the tool. The method has several benefits, including its scalability and affordability, and is ideal for keeping up with people who may be transient, such as migrants and refugees.

"Though people may change SIM cards when moving to a new country, it is possible to keep the same WhatsApp number," says MDI Program Manager [Jessica Sadye Wolff](#). "This facilitates ease and continuous contact even with respondents who may move across borders."





Educational and Community Events

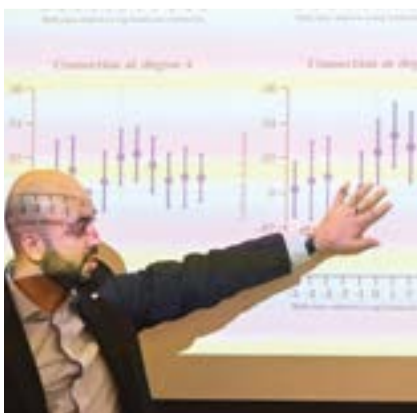
Food for Thought Student Events

- Lead Exposure—Steve Luby, Jenna Forsyth
- Using Data and AI to Address Human Trafficking—Grant Miller, Kim Babiarz, Sierra Wells
- Conducting Research with Local Partners—Jeremy Bowles, Marcel Fafchamps, Jenna Forsyth, Melanie Morten
- Working at the World Bank—Kathleen Beegle
- The Impact of Management on Firm Performance—Nicholas Bloom



Speaker Series

- The Crisis Facing Development—David Malpass
- Youth Employment in Africa—Misan Rewane, Kathleen Beegle
- Business Environment in Africa—Hakeem Belo-Osagie
- Good Economics for Warmer Times—Esther Duflo
- Combining Activism and Academia—Léonard Wantchékon
- Malaria Eradication—Jane Achan, Ally Olotu, Michelle Hsiang



Conferences and Convenings

- 2022 Global Development Postdoctoral Fellows Conference
- The Power of Hope: Effective Approaches to Women’s Empowerment in Global Development—Shameran Abed, Scott MacMillan, Manisha Shah
- 2022 Conference on Firms, Trade, and Development
- Social Mobility Transitions in and Out of Poverty—Anirudh Krishna
- The Call to Service Conference
- 2023 Development and Political Economics Graduate Student Conference (DEVPEC)
- HIV, COVID, Infectious Diseases, and Equity: A Focus on Africa—Monica Gandhi
- Decent Fisheries Work in a Changing Climate Workshop
- Political Economy of the Environment and Climate Research Mini Conference



Past Events

Photos at left: Fellows, visiting scholars, and guests enjoy King Center convenings.





Economics for a Changing Climate *A Discussion with Nobel Laureate Esther Duflo*

In April 2023, the King Center hosted Nobel laureate Esther Duflo, the Abdul Latif Jameel Professor of Poverty Alleviation and Development Economics at MIT, who discussed the relationship between poverty and climate change and the role of developed countries in mitigating the impacts of global warming. Duflo discussed the issues with Arun Majumdar, dean of the Stanford Doerr School of Sustainability.

Transforming Business in Africa *A Talk with Nigerian Entrepreneur Hakeem Belo-Osagie*

When Nigerian entrepreneur Hakeem Belo-Osagie graduated from Harvard Business School, he accepted the lowest-paid position in his class—a job with the Nigerian government. He went on to found companies in energy, finance, and telecommunications. Belo-Osagie spoke at the King Center in March 2023 with incoming King Center Faculty Director and Graduate School of Business (GSB) Professor Katherine Casey about the need for talent in the public sector and the nuances of doing business in Nigeria and across Africa.



Monetary Policies & Global Impacts *Insights from World Bank Group President David R. Malpass*

In September 2022, the King Center and the Stanford Institute for Economic Policy Research (SIEPR) hosted then-World Bank Group president David R. Malpass, who delivered remarks about how monetary and fiscal policies in developed economies have created additional challenges for developing countries. Those challenges date back to the 2008 financial crisis and have deepened since the COVID pandemic. Malpass answered questions from audience members and GSB Professor Katherine Casey.

Financials and Support

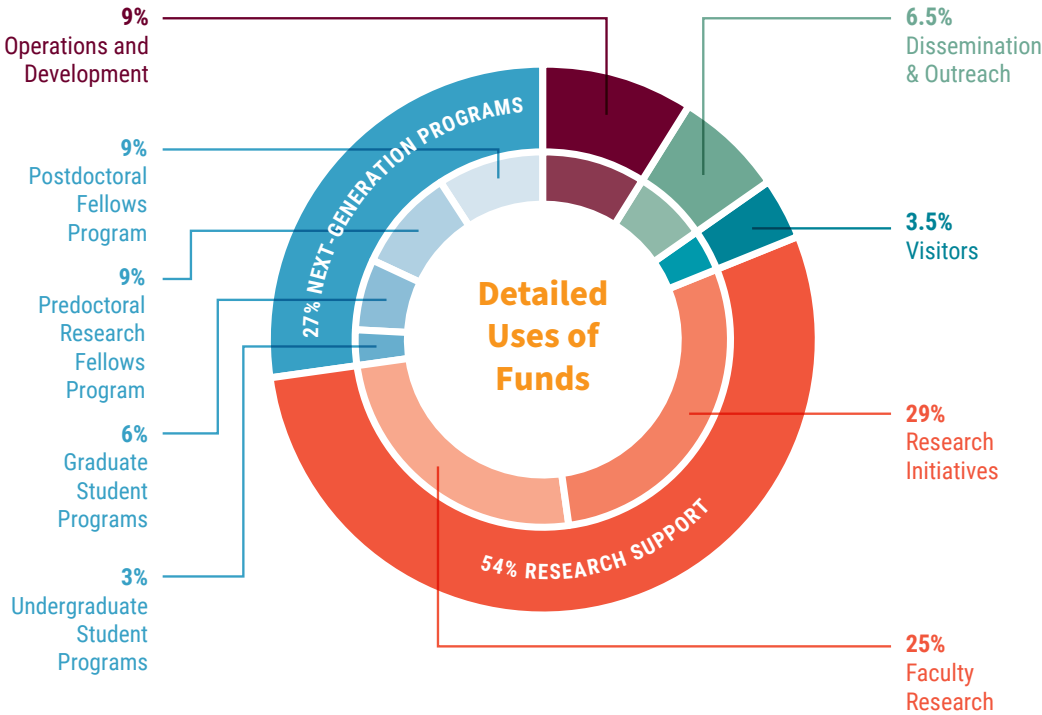
September 1, 2022–August 31, 2023

King Center Funding Sources FY23

Endowment Payouts	\$4,436,551
Term Endowment Shares Sales	\$1,382,073
Startup Funds	\$662,755
University Central	\$561,808
University Partnerships and Transfers	\$459,369
Gifts	\$187,538
Total	\$7,690,094

King Center Funding Uses FY23

Research Support	\$4,146,695
Next-Generation Programs	\$2,081,771
Operations and Development	\$697,968
Dissemination and Outreach	\$495,657
Visitors	\$268,003
Total	\$7,690,094



The 2023 fiscal year proved to be our most ambitious yet. We grew our next-generation programming and saw the full resumption of field work and completion of many research projects that were postponed due to COVID. We increased our spending by 36% in 2022–2023 compared to fiscal year 2022 to better resource our research funding for faculty, fellows, and students and invest in the next generation of global scholars. Looking ahead to 2024, we intend to build upon our programs and offer more research opportunities to help accelerate the end of global poverty.

The important research conducted at the King Center is powered by the generosity of our supporters who make it possible for the center and its affiliates to inform policies and practices to help solve the pressing challenges in global development. We are incredibly grateful to our donors and look forward to sharing gift opportunities in the coming year.

Donor Spotlight

Noosheen Hashemi Endows King Center Visiting Fellow Fund

Inspired by her passion for international development, [Noosheen Hashemi](#), MS '93, established the endowed visitors fund to enable the King Center's visiting fellows program. This fund allows us to host notable academics from universities across the globe each semester to conduct research at the King Center—but their lasting impact on campus is much greater. Our fellows bring valuable new perspectives to the Stanford global development community, forge new collaborations with faculty and graduate students, and serve as advisors and mentors to our students, postdoctoral fellows, and predoctoral fellows.

"The King Center is Stanford's window into the world of global development, inspiring multidisciplinary research and scholars that are addressing some of the world's most pressing problems," explains Hashemi. "I've chosen to endow a visitors fund to support the King Center's visiting fellows' program. Through my gift, I know that I'm investing in the next generation of global thought leaders."



Background photo: Drone image over Lake Nokoué, Benin.
Photo credit: 2023 Photo Contest winner Liza Goldberg, BS '24.



Visiting Fellow

Léonard Wantchékon, Noosheen Hashemi Visiting Professor at the King Center

The James Madison Professor of Political Economy at Princeton University, [Léonard Wantchékon](#) visited the King Center from January to June 2023 as part of the Noosheen Hashemi visitors fund. Wantchékon has made

substantive and methodological contributions to the fields of political economy, economic history, and developmental economics, and he has also contributed significantly to the literature on clientelism and state capture, resource curse, and democratization.

"My enriching time at the Stanford King Center on Global Development ... was filled with engaging academic exchanges and significant advancements in my research and entrepreneurship work," said Wantchékon. "The valuable exchanges with the highly talented predocs, postdocs, grad students, and faculty members have been quite insightful for me on a personal and professional level."






Opportunities to Engage

Read our Newsletter

To stay updated on new research insights, events, and other news, visit the King Center's website and subscribe to our bimonthly newsletter: <https://kingcenter.stanford.edu>

Follow us on Social Media

   @StanfordKingCtr

Support our Work

To learn more about how to contribute and shape the King Center's work, please visit: <https://kingcenter.stanford.edu/giving>

Contact us

John A. and Cynthia Fry Gunn Building
366 Galvez Street, 3rd Floor
Stanford, CA 94305-6015 USA
+1 (650) 725-873



Above:

Predocctoral Research Fellow Suhi Hanif interviews a mother for a public health study in Bangladesh. Photo credit: Tarek Mahmud

Front cover:

Top row, left to right: Arun Majumdar (Dean of the Doerr School of Sustainability, moderator at a King Center Speaker Series event), Marie Christelle Mabeu (King Center Postdoctoral Fellow), Ashton Xiong (King Center Research Assistant), Kyra Jasper (King Center Undergraduate Research Assistant)

Bottom row, left to right: Karmini Sharma (King Center Postdoctoral Fellow), Daniel Praburaj (King Center Predocctoral Research Fellow), Akhila Kovvuri (King Center Graduate Student Funding Recipient), Hakeem Belo-Osagie (Lecturer at the Graduate School of Business, speaker at a King Center Speaker Series event)